

FIGURE 13  
HAZARD CATEGORIES  
2% AEP EVENT  
CITY AREA CATCHMENT

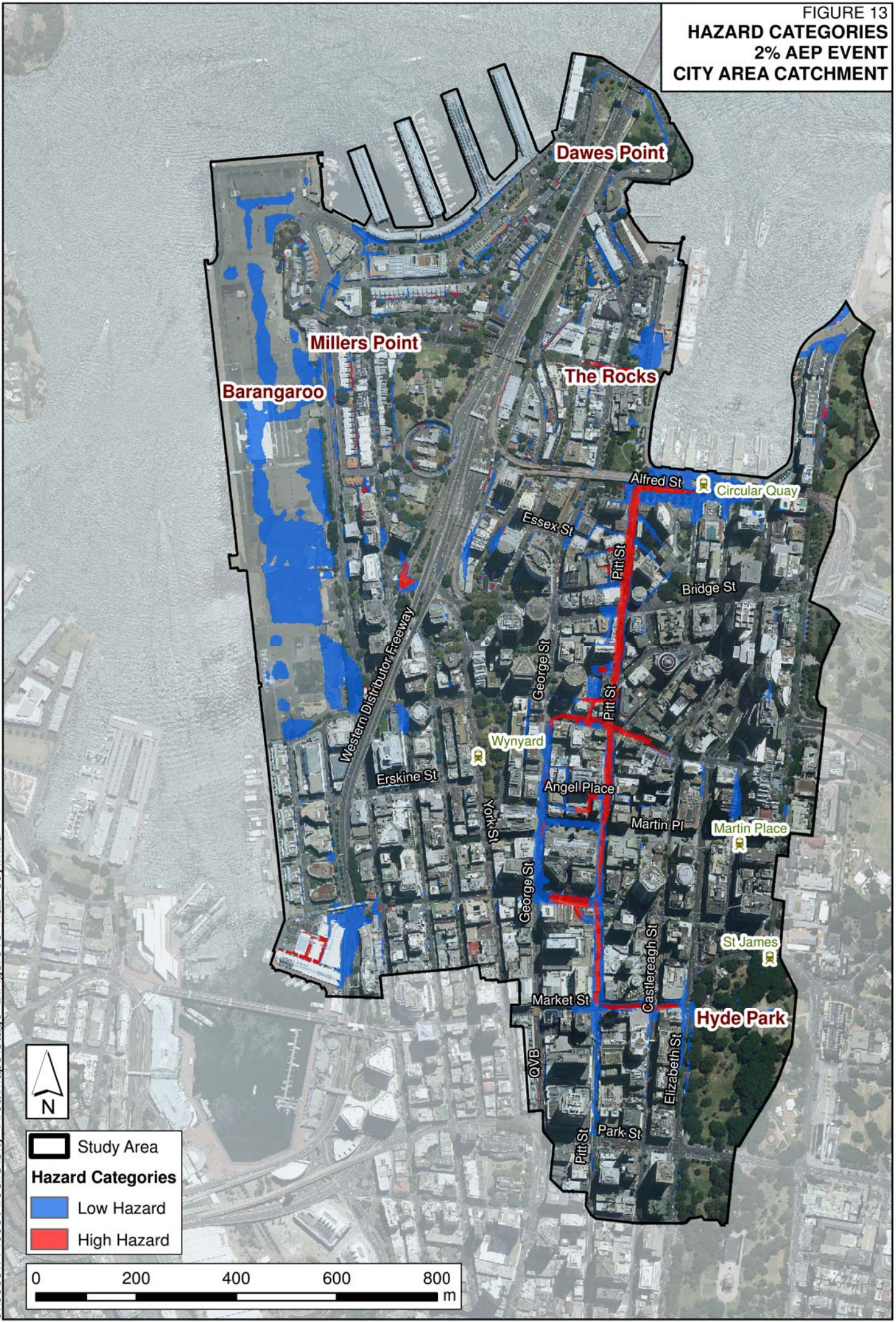


FIGURE 14  
HAZARD CATEGORIES  
1% AEP EVENT  
CITY AREA CATCHMENT



**Study Area**

**Hazard Categories**

- Low Hazard
- High Hazard



FIGURE 15  
HAZARD CATEGORIES  
0.2% AEP EVENT  
CITY AREA CATCHMENT



**Study Area**

**Hazard Categories**

- Low Hazard
- High Hazard



FIGURE 16  
HAZARD CATEGORIES  
PMF EVENT  
CITY AREA CATCHMENT

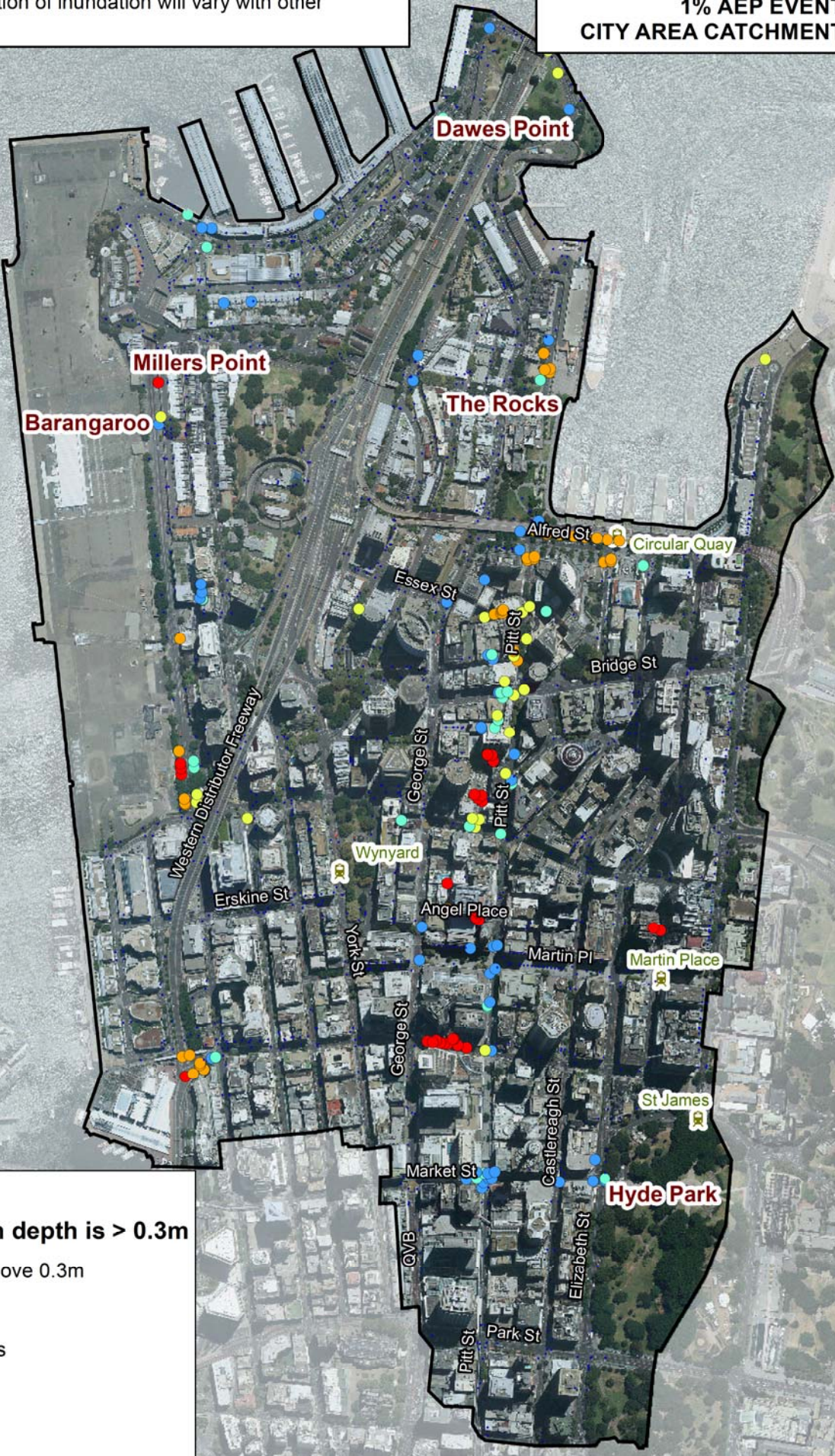


- Study Area
- Hazard Categories**
- Low Hazard
- High Hazard



**DURATION OF INUNDATION  
1% AEP EVENT  
CITY AREA CATCHMENT**

Note: Durations shown on this figure are for a 1% AEP design event duration of 1 hour. Duration of inundation will vary with other event durations.



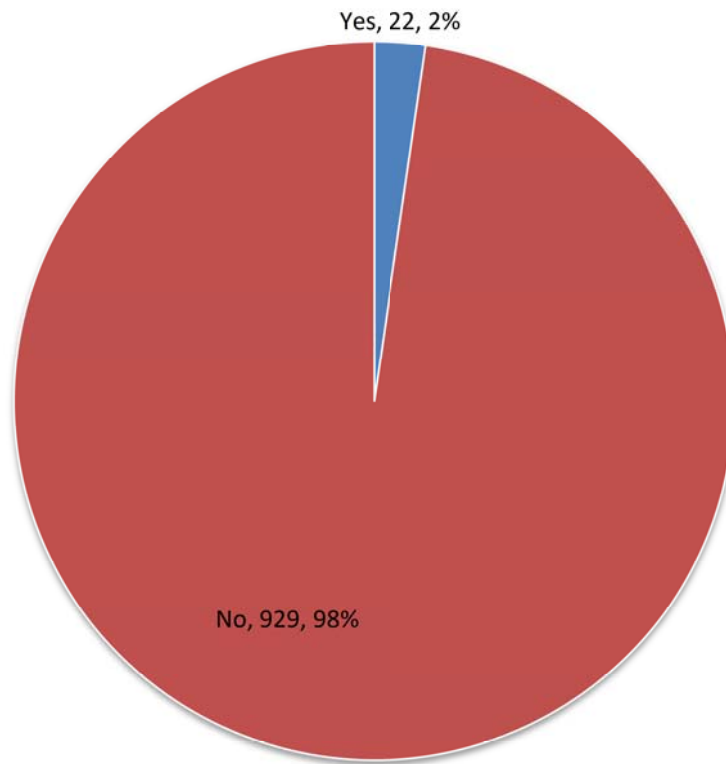
**Study Area**

**Duration for which depth is > 0.3m**

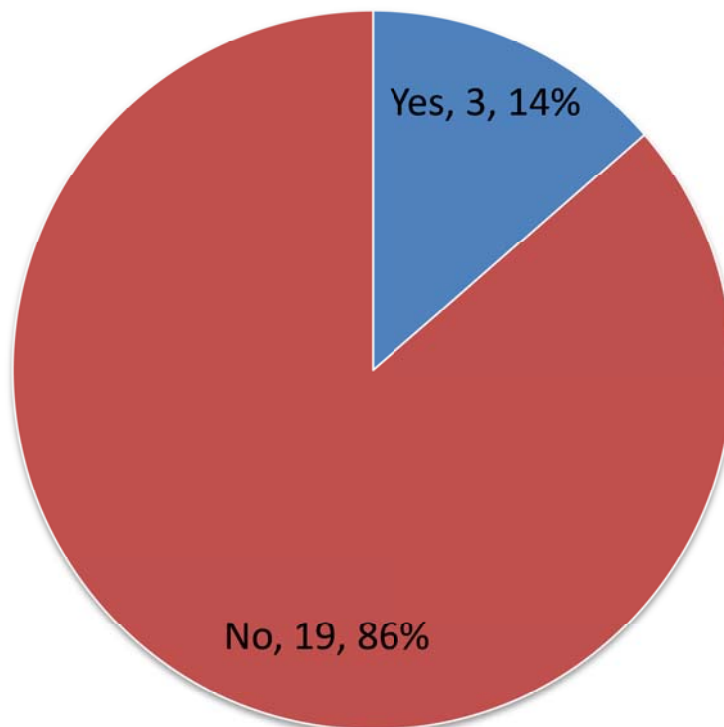
- Not inundated above 0.3m
- < 15 mins
- 15 mins - 30 mins
- 30 mins - 1 hour
- 1 hour - 2 hours
- > 2 hours



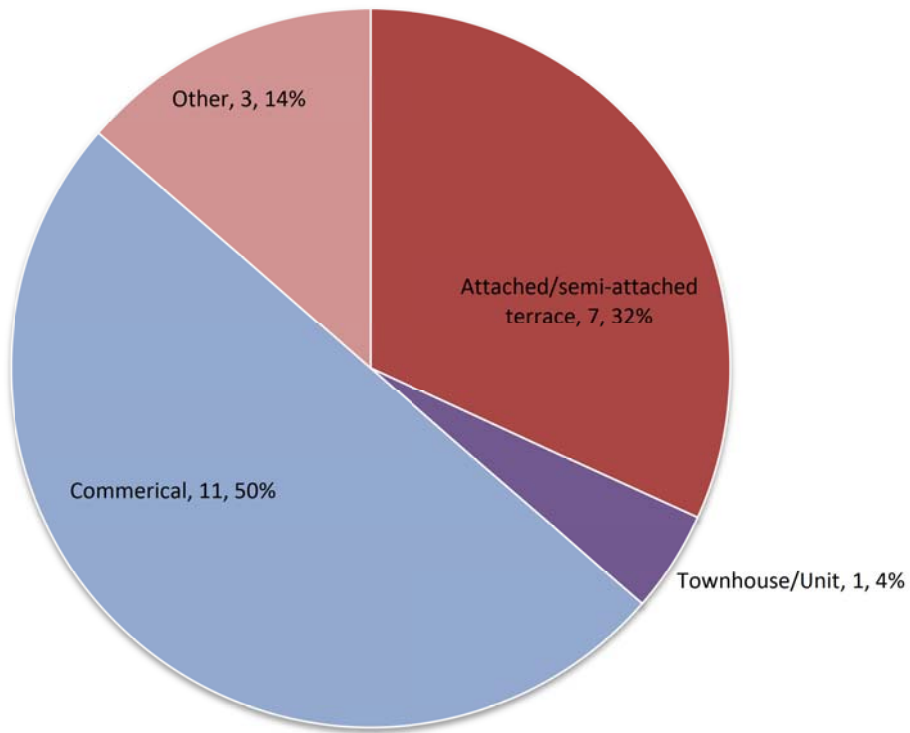
### A: Number of Respondents



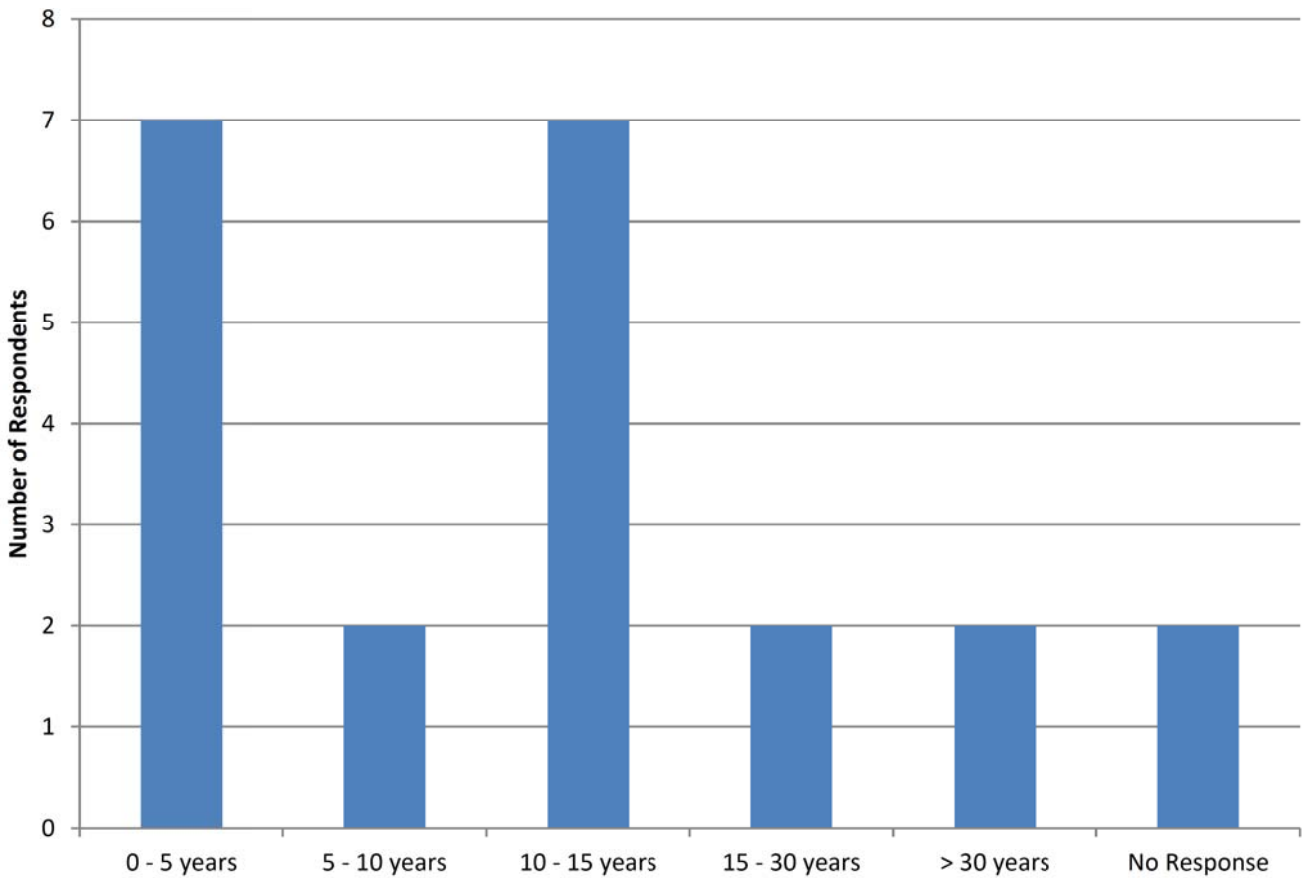
### B: Experienced Flooding



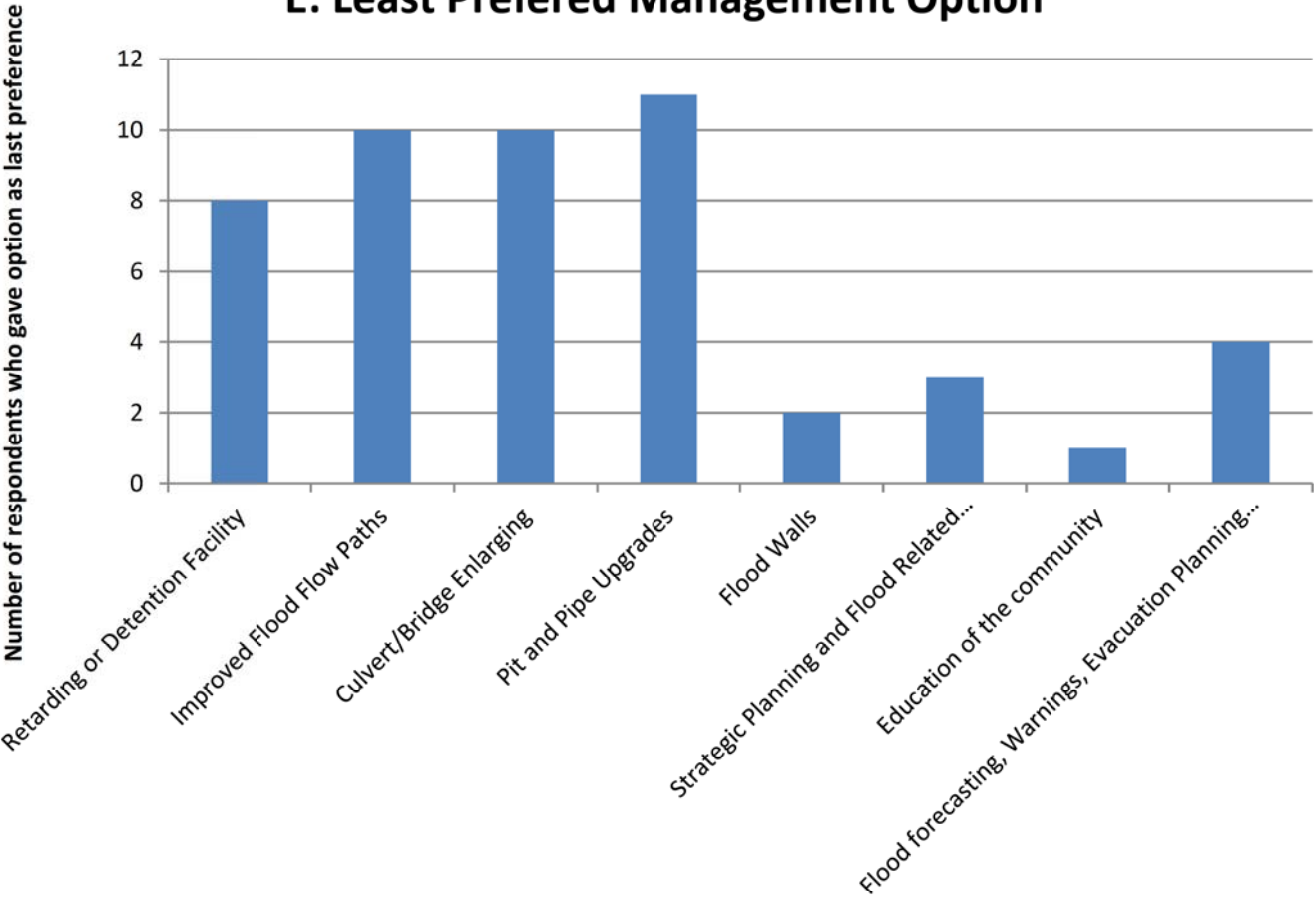
### C: Property Type



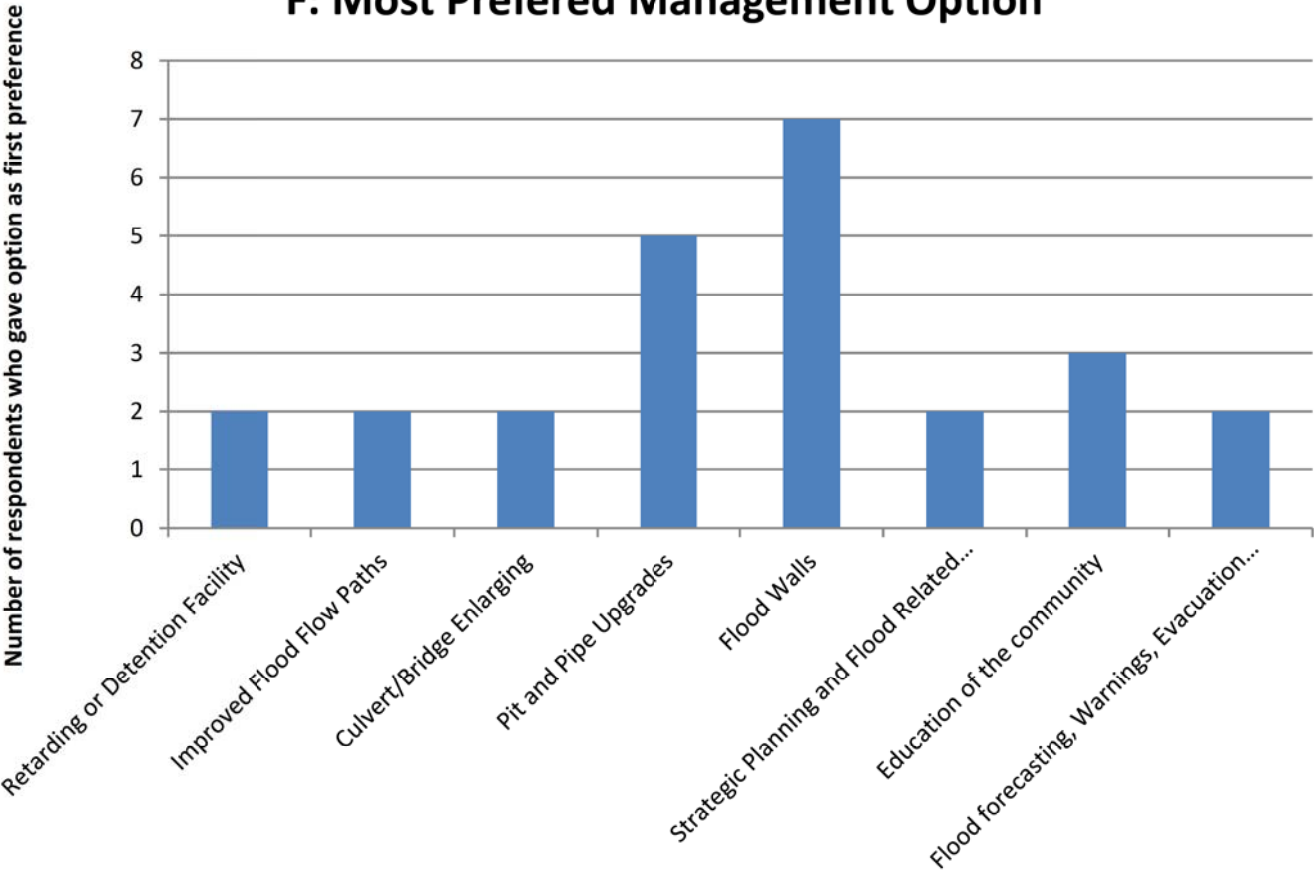
### D: Period of Living/Working/Owning Property



**E: Least Preferred Management Option**



**F: Most Preferred Management Option**





### G: Location of Flooding Experienced

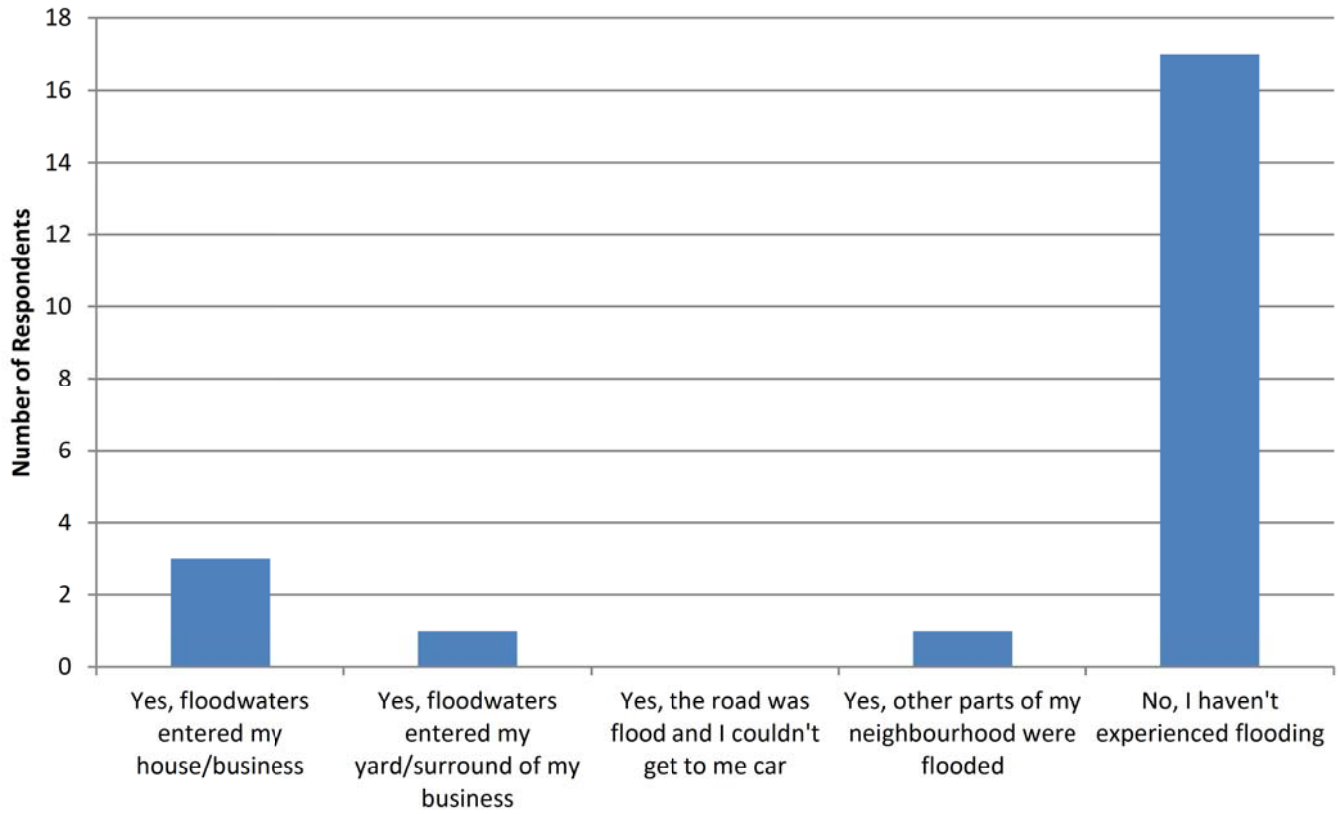


FIGURE 19  
**PROPERTIES FLOODED  
 CITY AREA CATCHMENT**

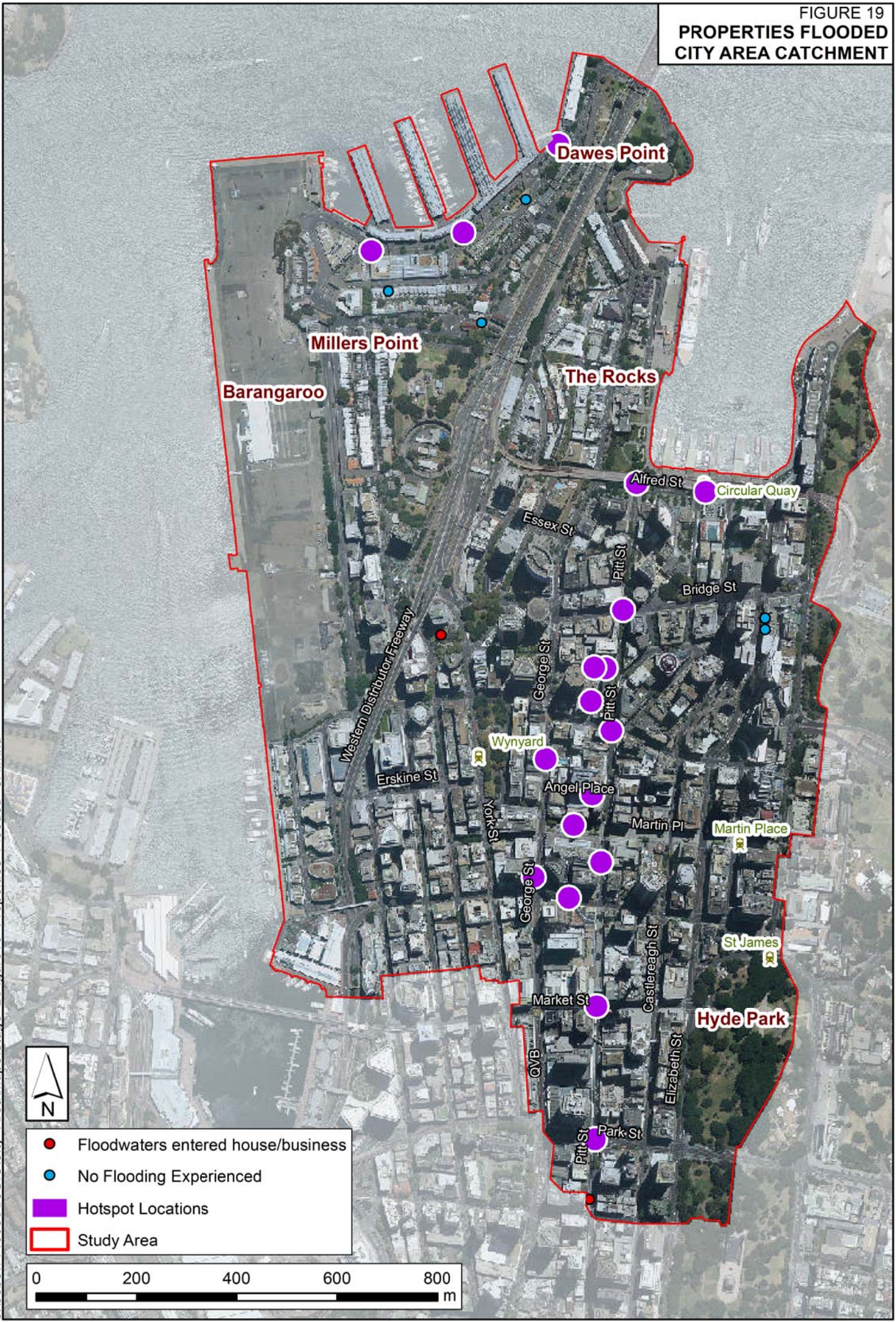
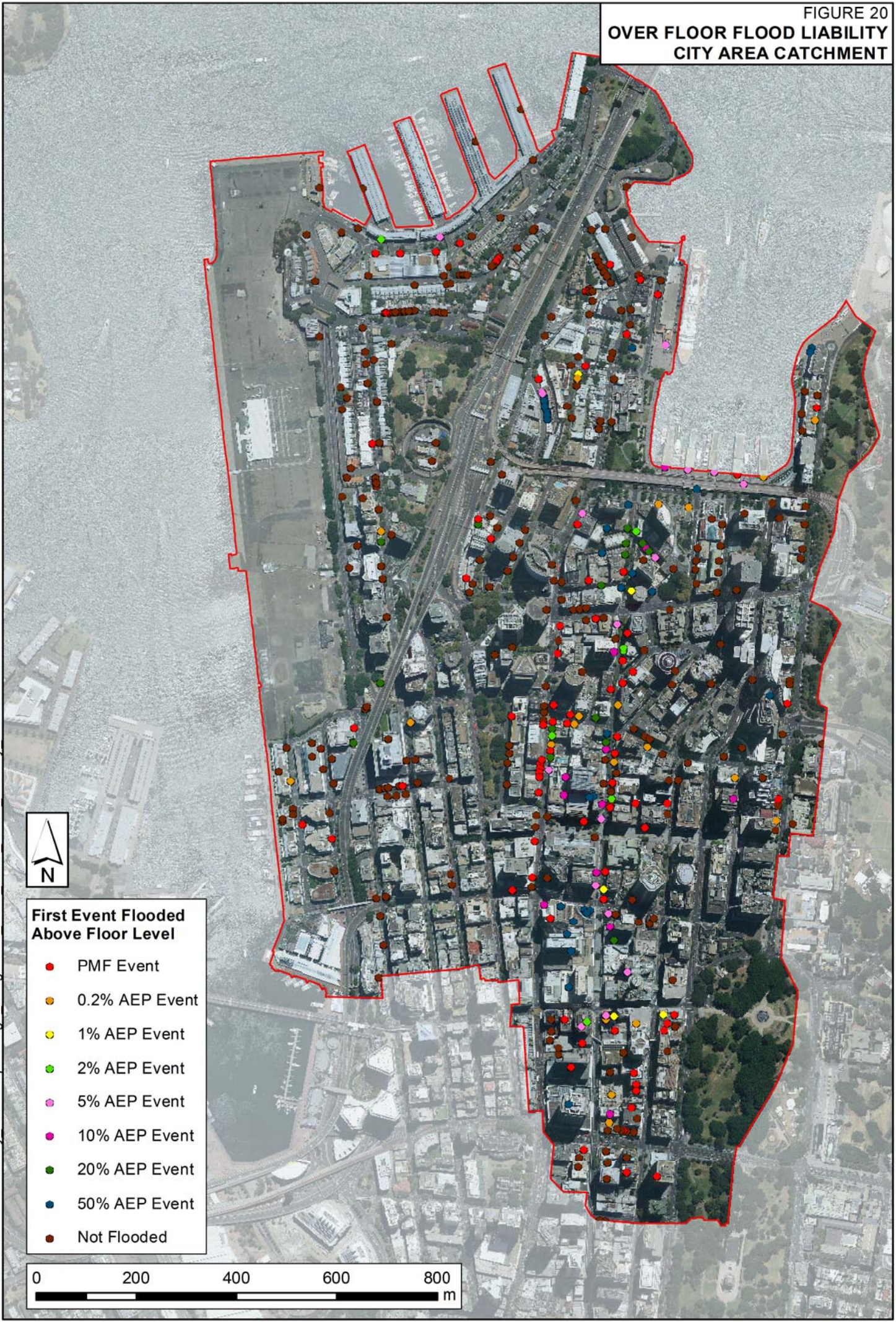


FIGURE 20  
OVER FLOOR FLOOD LIABILITY  
CITY AREA CATCHMENT



J:\Jobs\114095\ArcGIS\City Area Maps\Stage 2\Figure20\_Over\_Floor\_Flood\_Liability\_CA.mxd



- First Event Flooded Above Floor Level**
- PMF Event
  - 0.2% AEP Event
  - 1% AEP Event
  - 2% AEP Event
  - 5% AEP Event
  - 10% AEP Event
  - 20% AEP Event
  - 50% AEP Event
  - Not Flooded

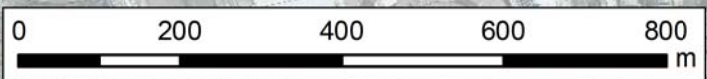


FIGURE 21  
 CITY AREA CATCHMENT  
 ACCESS ROAD FLOODING  
 1% AEP EVENT

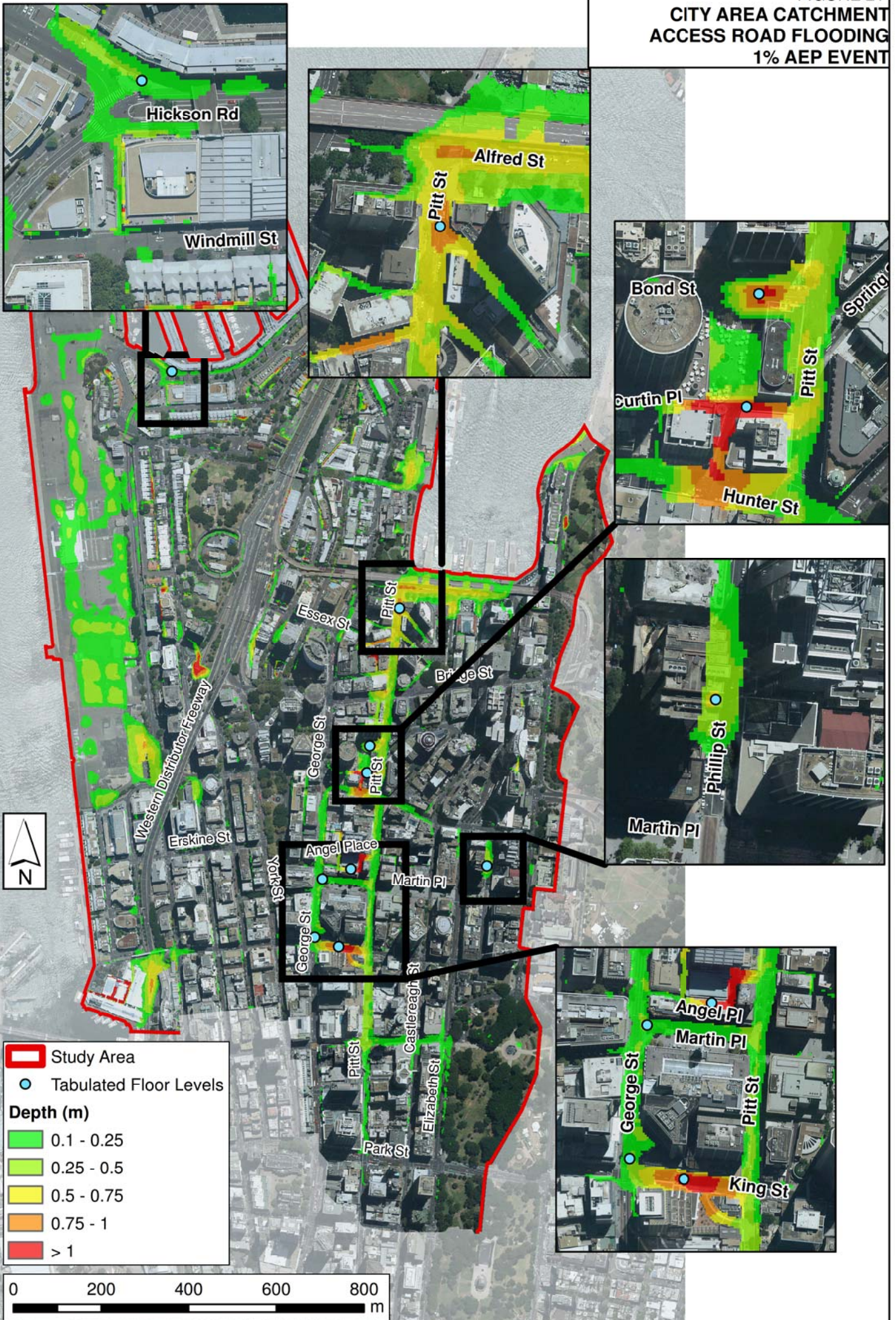
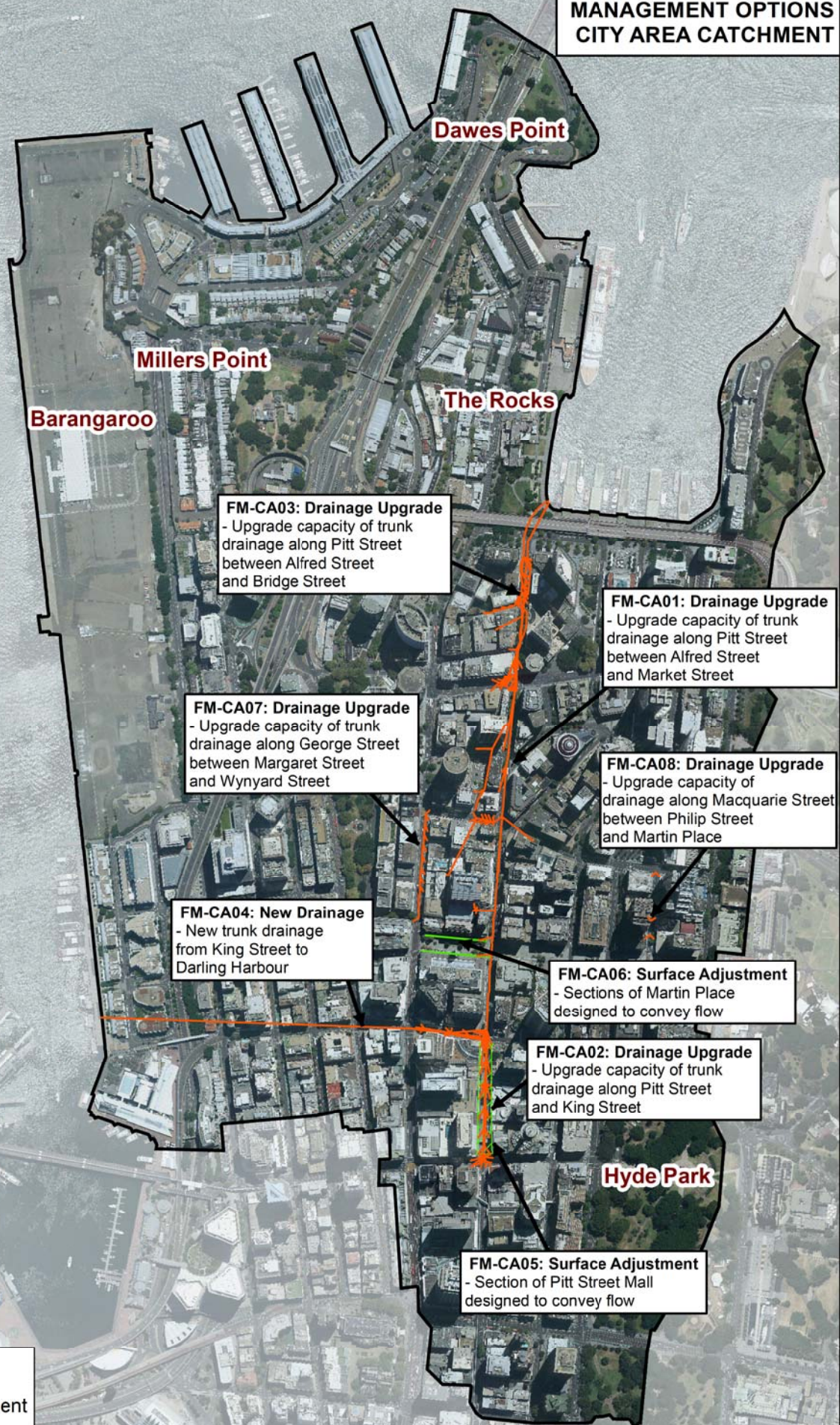





FIGURE 22  
**FLOOD RISK MITIGATION  
 MANAGEMENT OPTIONS  
 CITY AREA CATCHMENT**



-  New Pipe
-  Surface Adjustment
-  Study Area

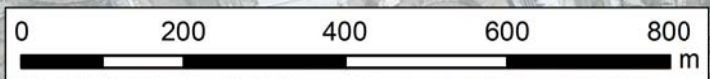
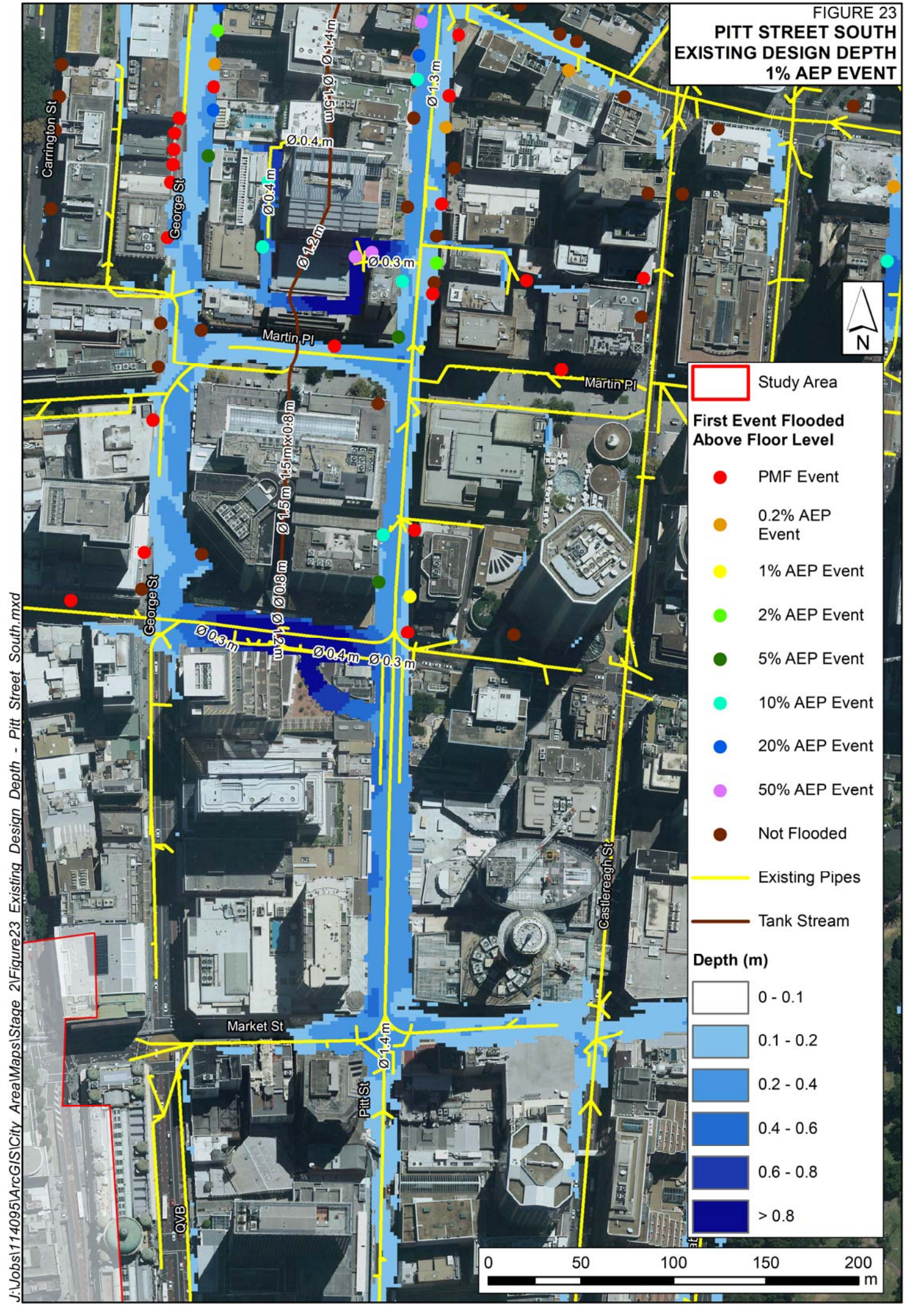
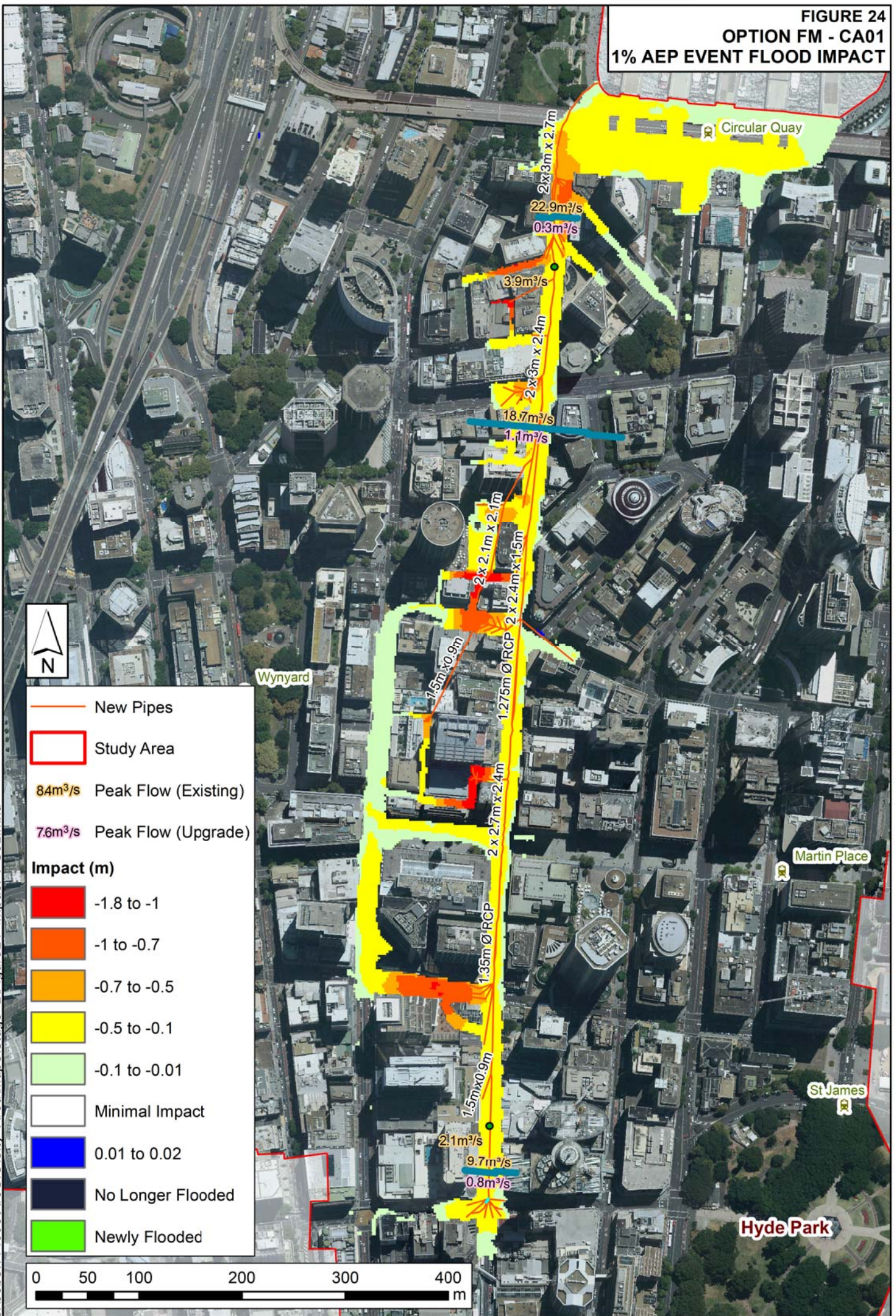


FIGURE 23  
**PITT STREET SOUTH**  
**EXISTING DESIGN DEPTH**  
**1% AEP EVENT**



J:\Jobs\114095\ArcGIS\City Area Maps\Stage 2\Figure23 Existing Design Depth - Pitt Street South.mxd

**FIGURE 24  
OPTION FM - CA01  
1% AEP EVENT FLOOD IMPACT**

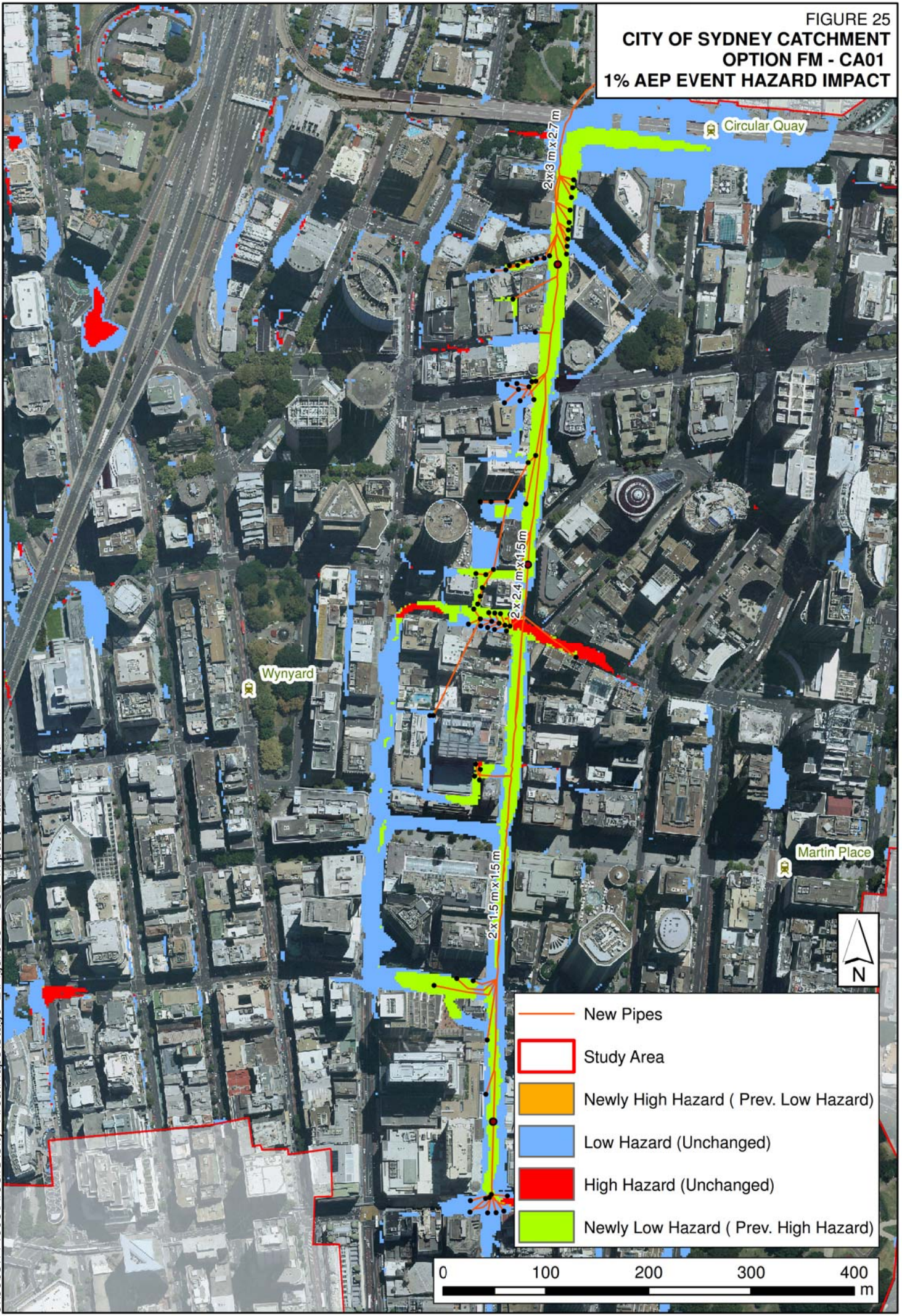


- New Pipes
  - Study Area
  - 84m<sup>3</sup>/s Peak Flow (Existing)
  - 7.6m<sup>3</sup>/s Peak Flow (Upgrade)
- Impact (m)**
- 1.8 to -1
  - 1 to -0.7
  - 0.7 to -0.5
  - 0.5 to -0.1
  - 0.1 to -0.01
  - Minimal Impact
  - 0.01 to 0.02
  - No Longer Flooded
  - Newly Flooded









J:\Jobs\114095\ArcGIS\City Area Maps\Stage 2\Figure24\_Impact\_PS02.mxd

FIGURE 25  
 CITY OF SYDNEY CATCHMENT  
 OPTION FM - CA01  
 1% AEP EVENT HAZARD IMPACT



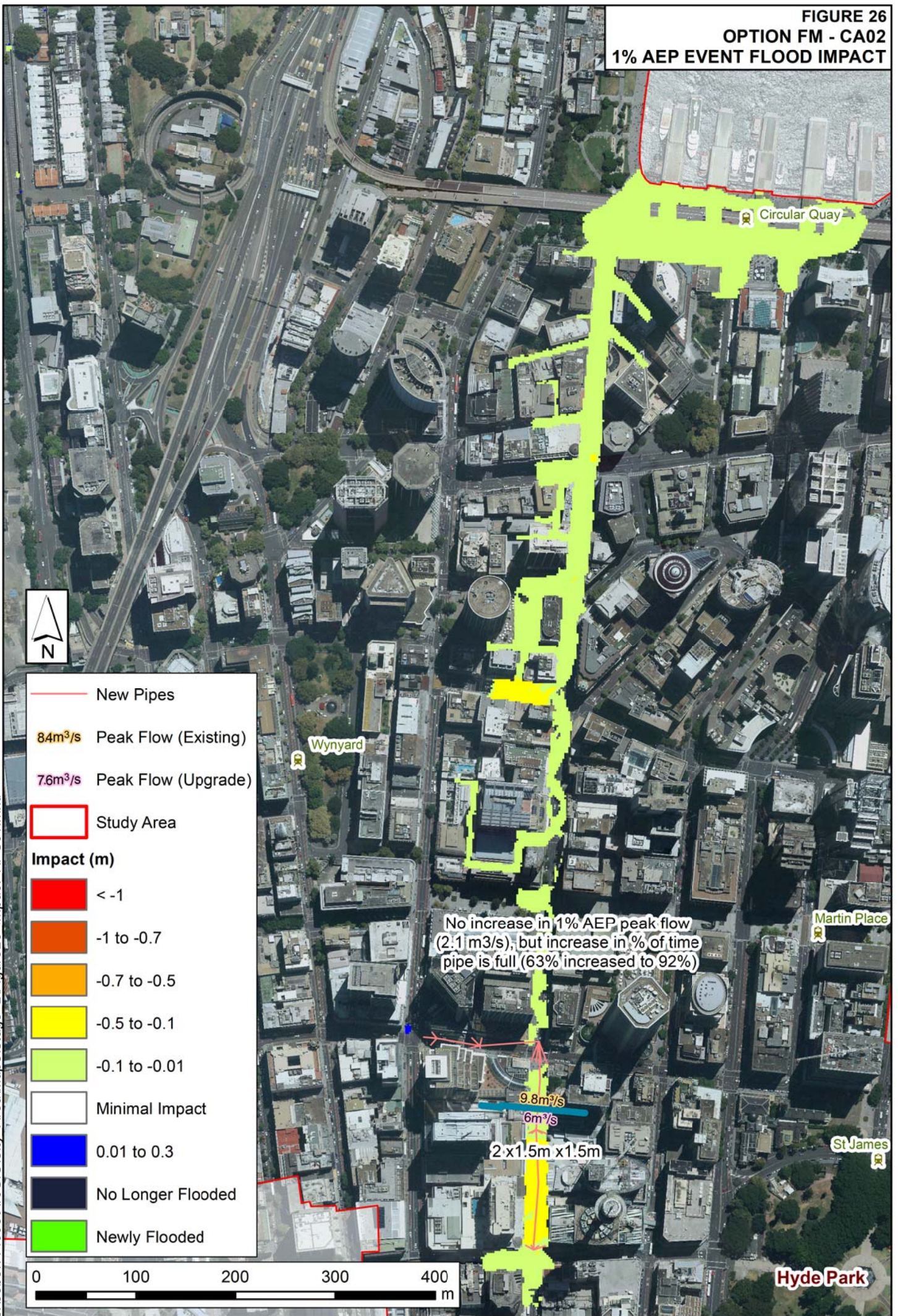
J:\Jobs\114095\ArcGIS\City Area\Maps\Stage 2\Figure25\_PS02\_Impact\_Hazard.mxd

-  New Pipes
-  Study Area
-  Newly High Hazard ( Prev. Low Hazard)
-  Low Hazard (Unchanged)
-  High Hazard (Unchanged)
-  Newly Low Hazard ( Prev. High Hazard)

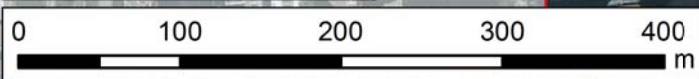
0 100 200 300 400 m



**FIGURE 26**  
**OPTION FM - CA02**  
**1% AEP EVENT FLOOD IMPACT**

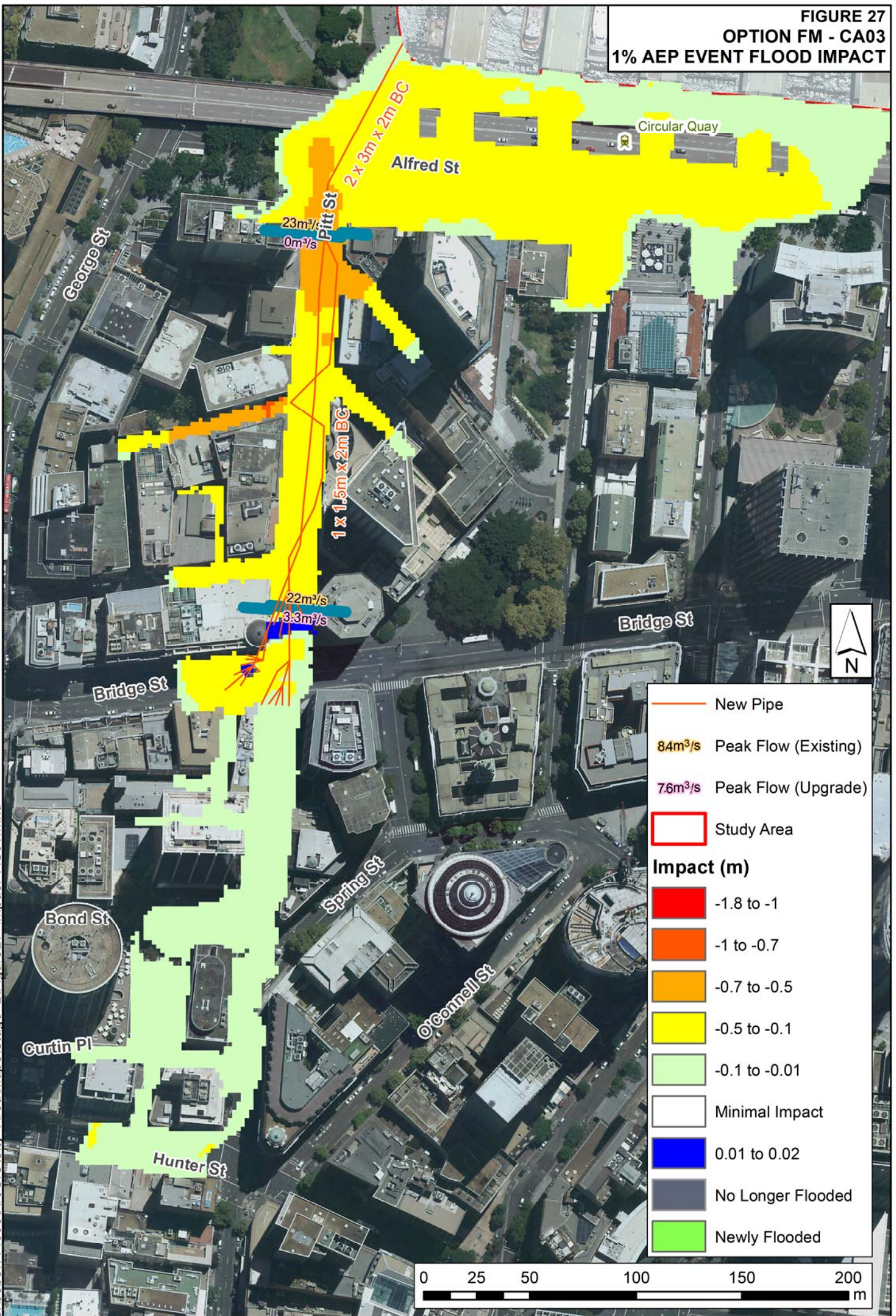


- New Pipes
- 84m<sup>3</sup>/s Peak Flow (Existing)
- 7.6m<sup>3</sup>/s Peak Flow (Upgrade)
- Study Area
- Impact (m)**
- < -1
- 1 to -0.7
- 0.7 to -0.5
- 0.5 to -0.1
- 0.1 to -0.01
- Minimal Impact
- 0.01 to 0.3
- No Longer Flooded
- Newly Flooded



J:\Jobs\114095\ArcGIS\City Area Maps\Stage 2\Figure26\_Impact\_KPS01.mxd

**FIGURE 27**  
**OPTION FM - CA03**  
**1% AEP EVENT FLOOD IMPACT**



**FIGURE 28**  
**OPTION FM - CA04**  
**1% AEP EVENT FLOOD IMPACT**

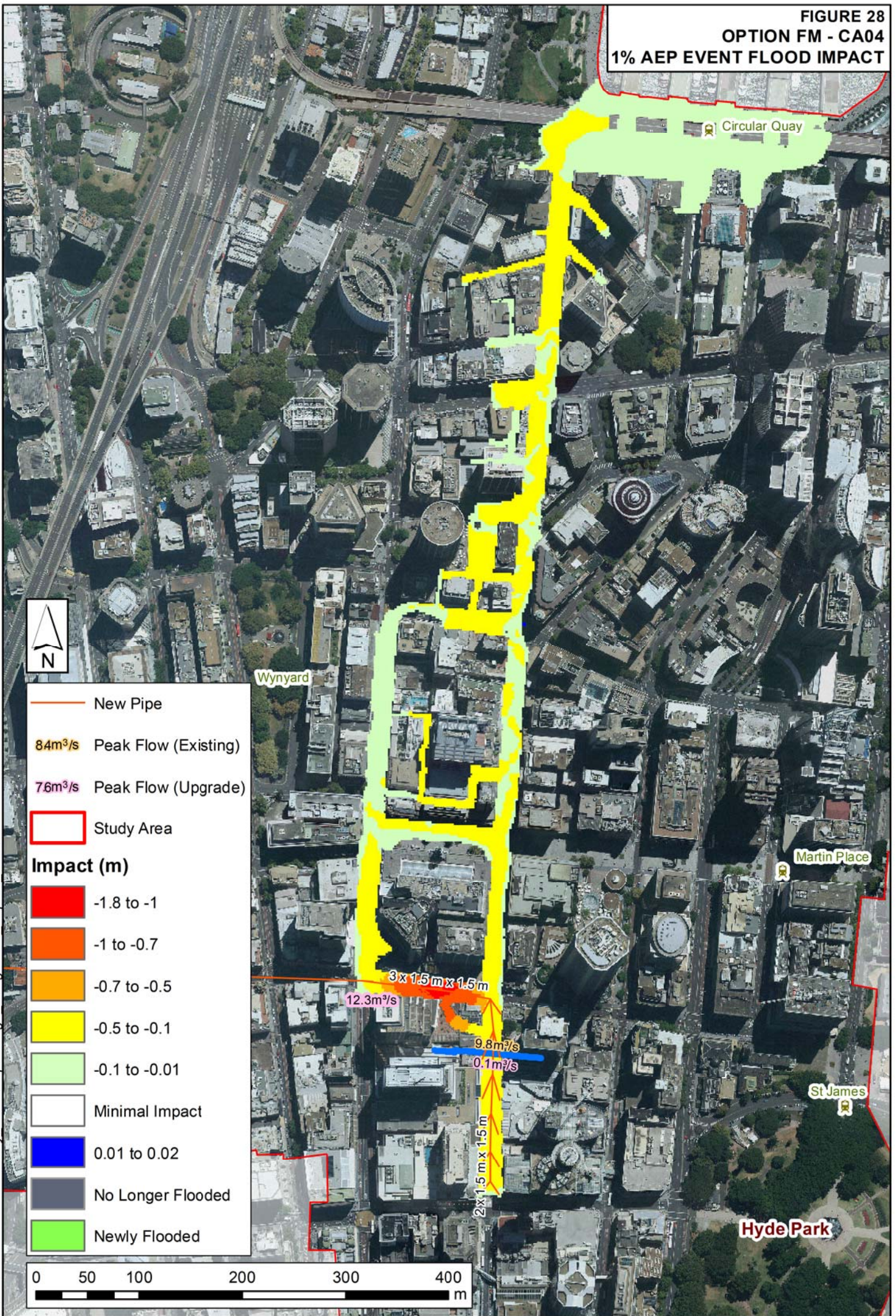
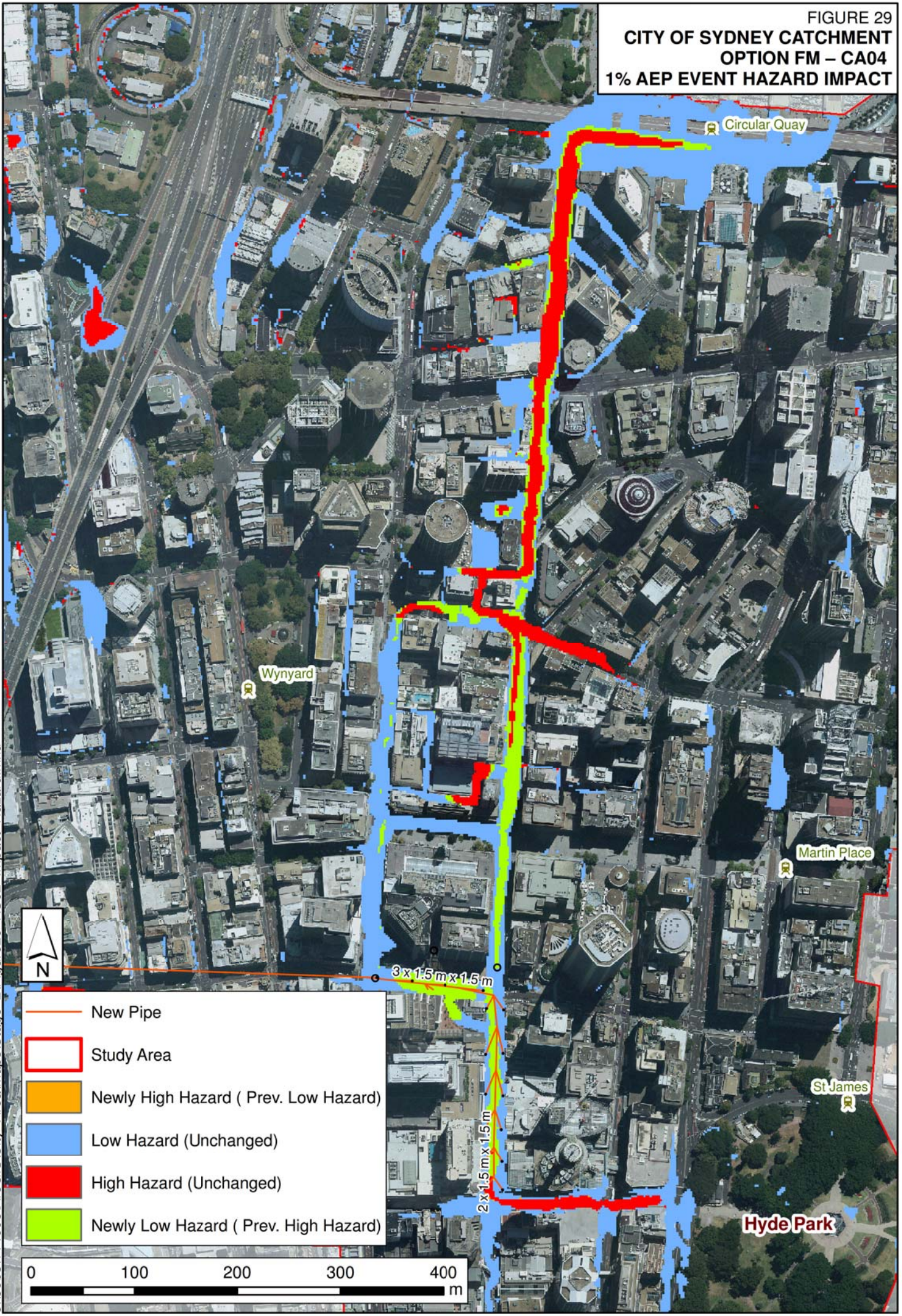






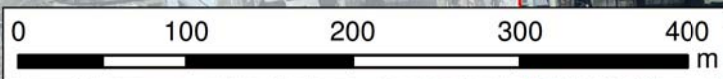


FIGURE 29  
 CITY OF SYDNEY CATCHMENT  
 OPTION FM – CA04  
 1% AEP EVENT HAZARD IMPACT



-  New Pipe
-  Study Area
-  Newly High Hazard ( Prev. Low Hazard)
-  Low Hazard (Unchanged)
-  High Hazard (Unchanged)
-  Newly Low Hazard ( Prev. High Hazard)



J:\Jobs\114995\ArcGIS\City Area\Maps\Stage 2\Figure29\_KS02\_Impact\_Hazard.mxd